

SonaSoft™ Installation Guide

Overview

This installation guide contains a detailed, step-by-step description of the installation process. The guide is meant to walk you through the entire process, while the points highlighted in the *Introduction* below could serve as a refresher for technicians who have either worked with the system in the past, or in general have some experience with the system.

Introduction

The SonaSoft™ installation uses a standard windows installer, and most of the prompts are straightforward and will be familiar if you have installed a program on windows before. However, there are a couple key system configuration settings that are set in the install, that may differ depending on your specific requirements, and / or may not be completely intuitive.

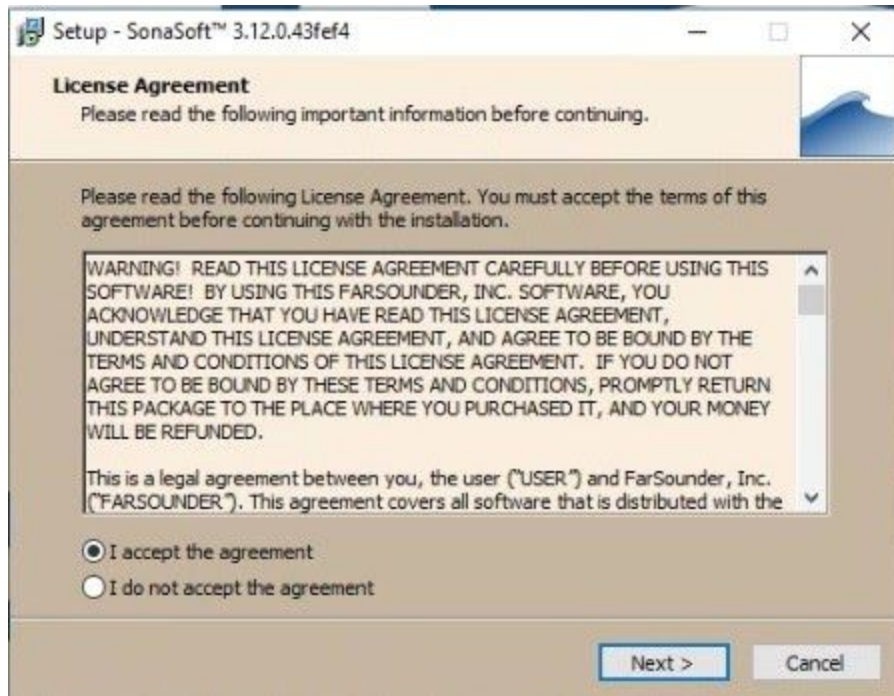
Those key configuration settings in the installation process are:

- Legacy Hardware (section [“Legacy Hardware Support”](#)) - install the drivers to allow communication with FarSounder-DT legacy systems, versus support for the more recent Argos 350 or Argos 500 or 1000 (recently rebranded from the FarSounder-500 FarSounder-1000).
- Network Configuration Settings (section [“Network Configuration Settings”](#)) - configure the network adapter on the FarSounder processing computer to allow communication with the Transducer Module.
- C-Map Runtime Installation (section [“C-Map Runtime Install \(Default\)”](#)) - install support for loading nautical charts into SonaSoft™’s *Chart Viewer*

Detailed Step-by-Step Guide

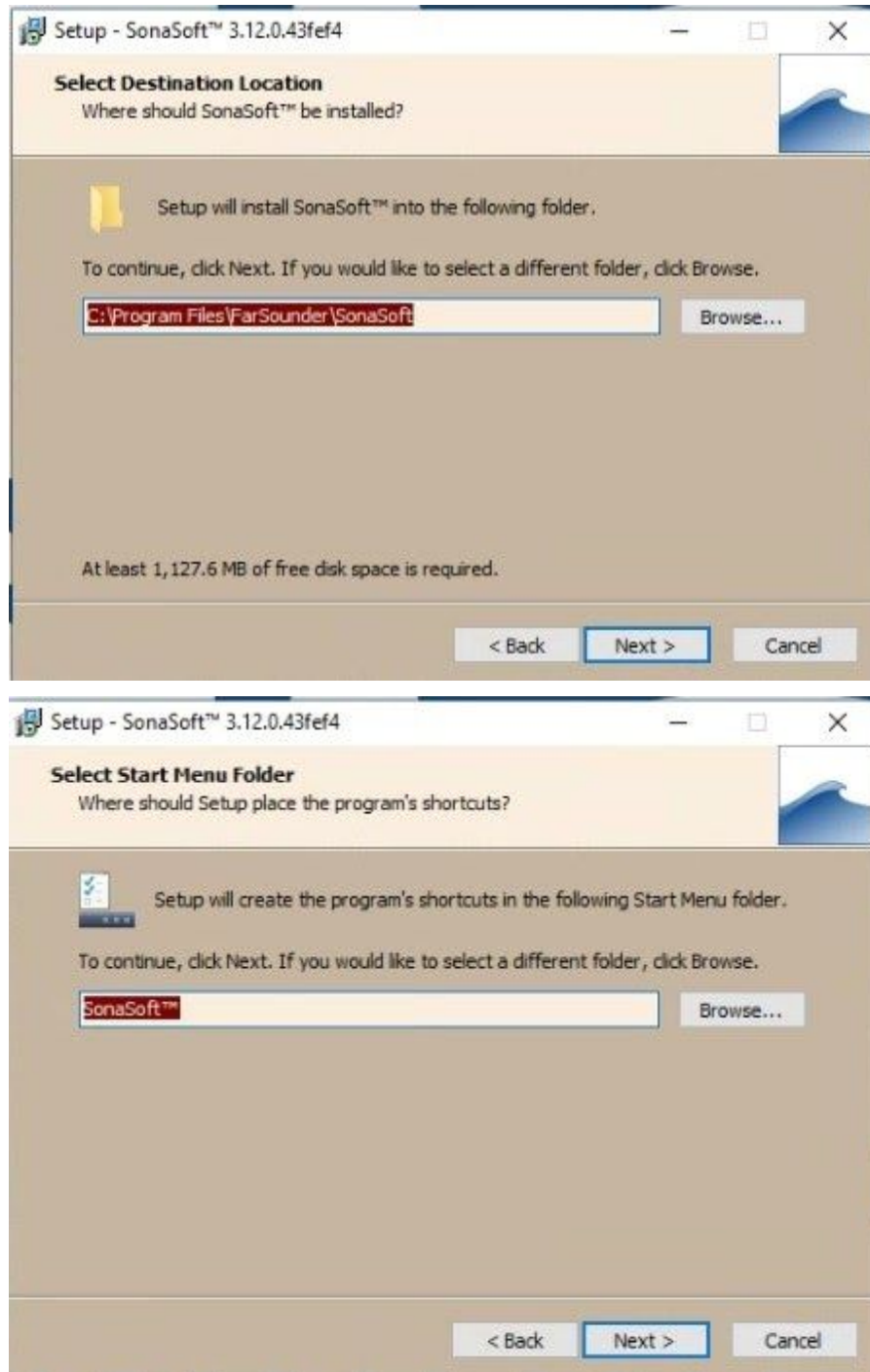
Download the SonaSoft™ installer to the desktop of the FarSounder processing computer and double click to run the installer.

You will see the following:



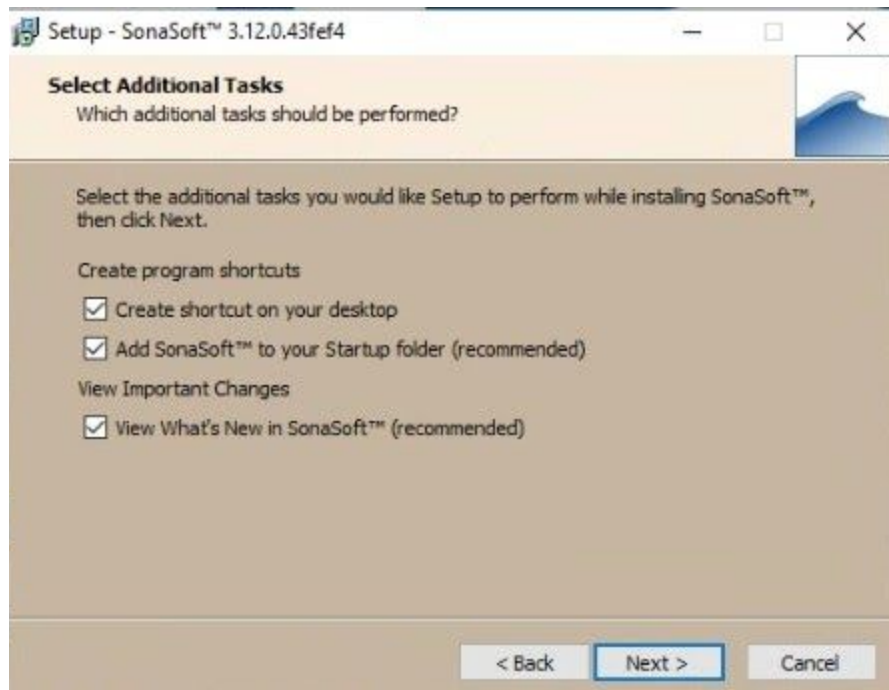
Click *Next* to continue the installer after reviewing and accepting the License Agreement.

The next step is to select the install directory and name of the install folder for SonaSoft™. **FarSounder recommends that the defaults are chosen**, you will see the following screens at this stage:



On clicking next, you will be presented with the option to install shortcuts to the desktop and start menu, as well as view the *What's New PDF* post install. Choose your preferences and

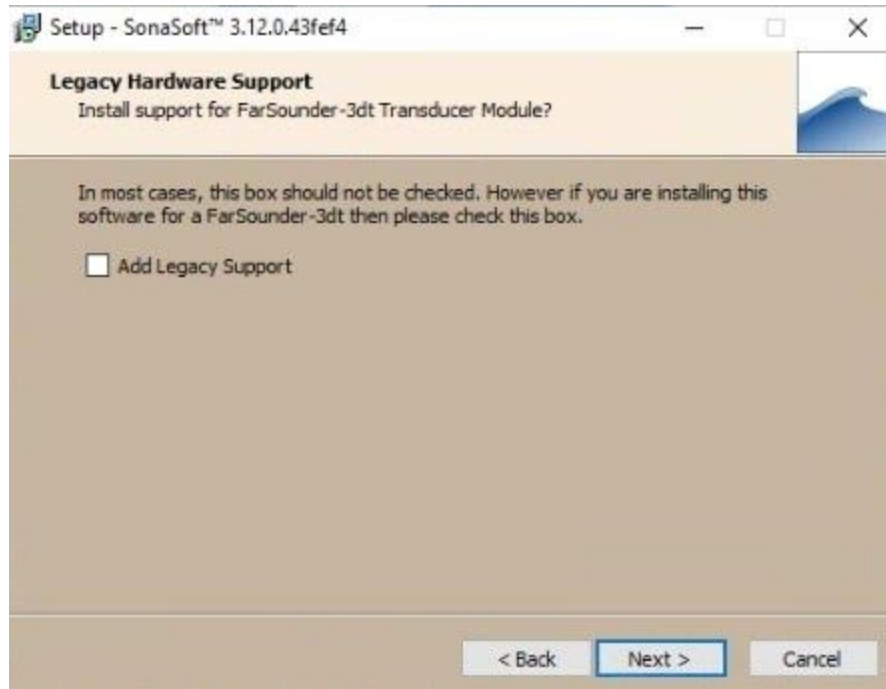
continue, note that at least installing the SonaSoft shortcut to the desktop is recommended for ease of use.



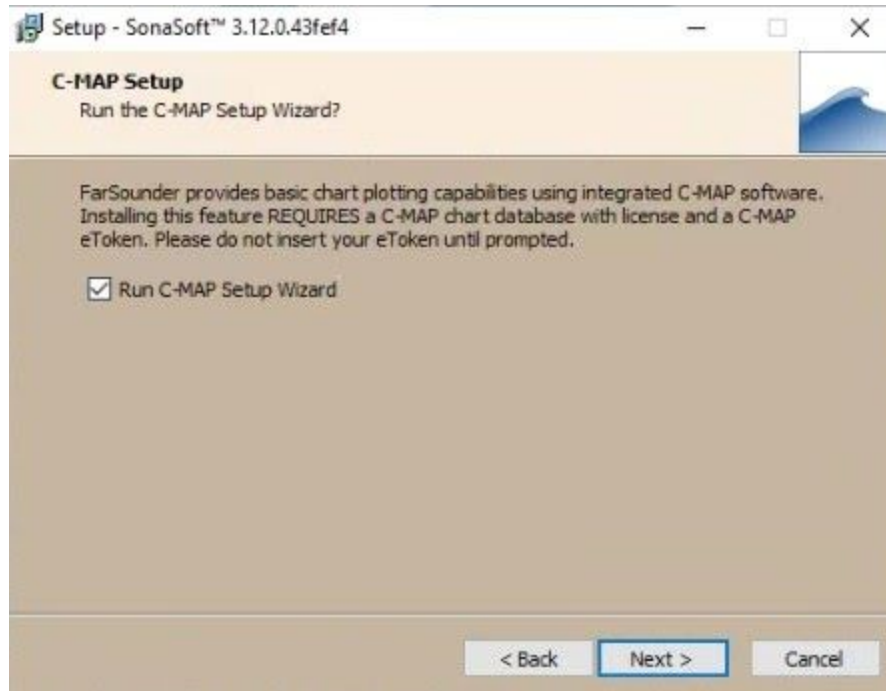
Continuing on, you will be prompted about whether to install support for legacy hardware.

Legacy Hardware Support

The default is not to install legacy support, and this option should be used for any Argos 350, Argos 500 or Argos 1000 product (The Argos 500 and Argos 1000 are the recently rebranded versions of the FarSounder 500 and FarSounder 1000). Only if the hardware present on your system is a **FarSounder-DT** model sonar, should this box be checked.

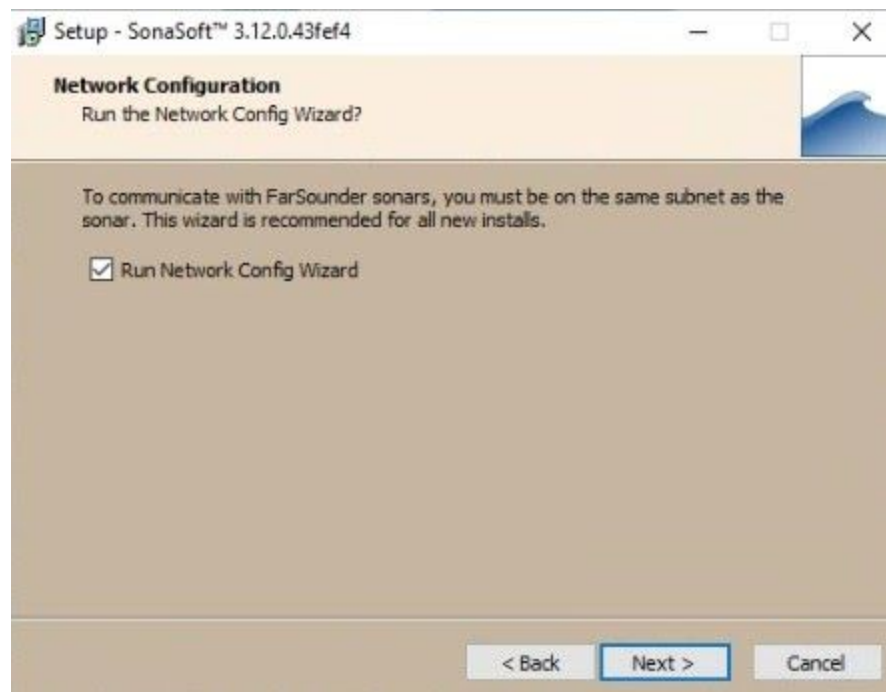


If you plan to use nautical charts in SonaSoft™'s Chart Viewer, either through trial or purchase of a C-Map chart data license or the import of S57 or S63 chart data from another source, you will need to install C-Map, so leave the following box checked (default). If you do not plan to use any of the chart display features, then it is ok to remove C-Map from the installation by unchecking the following box:



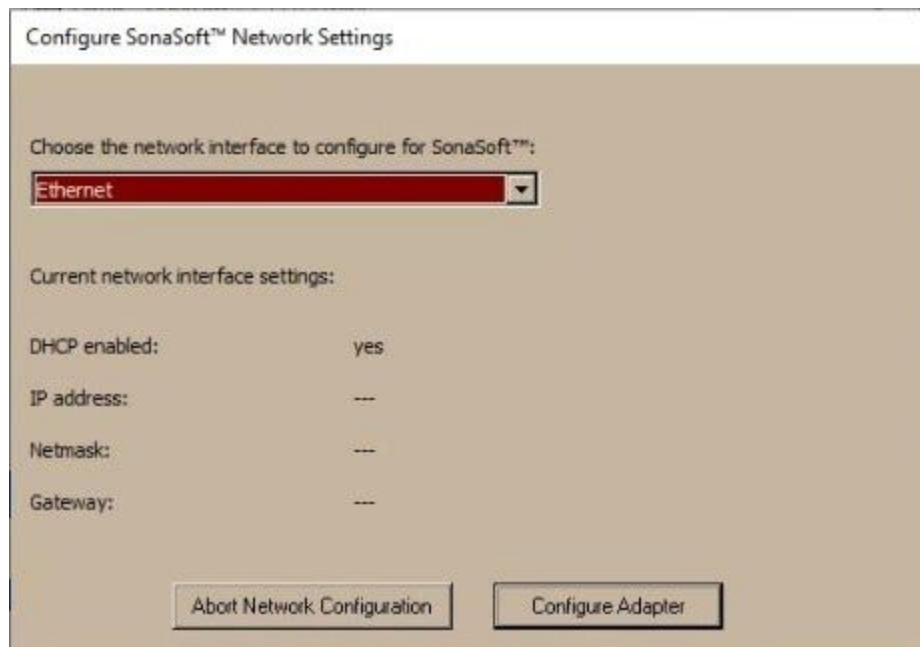
Network Configuration Settings

Next you will be prompted about whether to run the Network Configuration Wizard:

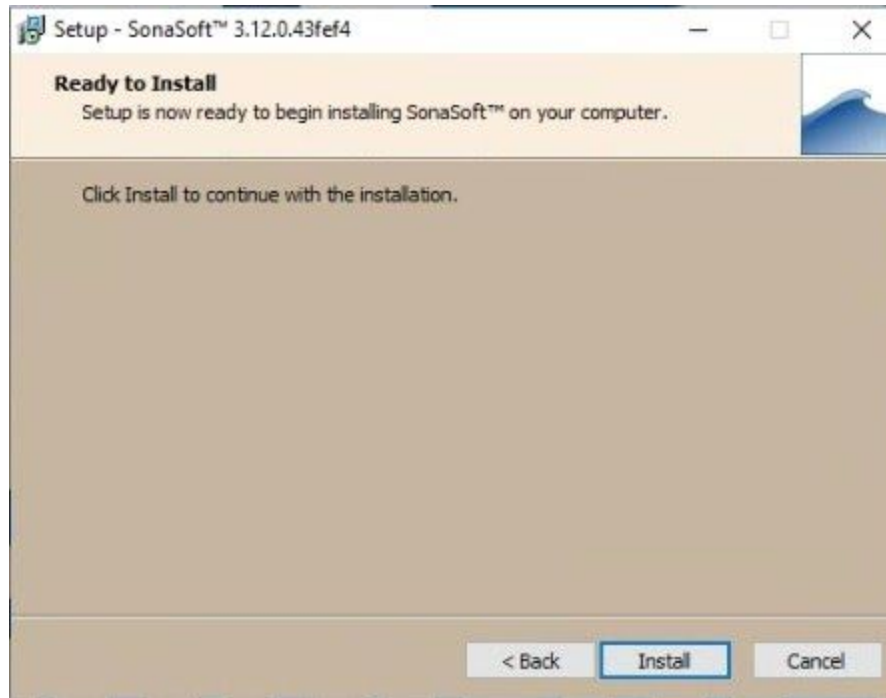


The FarSounder processing computer communicates with the Transducer Module via an ethernet connection. In order to communicate, NIC (network interface card) on the FarSounder processing computer must be configured with an IP address of *192.168.0.XXX*. The *Network Configuration Wizard* will help you configure that NIC. If you have already configured the NIC manually, or if this is an upgrade from a previous version of SonaSoft™, you will not need this step. As the IP for the NIC connected to the hardware will already have been configured.

To configure the network settings using the wizard, select the NIC from the drop down menu that is connected to the Transducer Module - this NIC will be configured so that it has an IP address in the 192.168.0.XXX range to allow SonaSoft™ to communicate with the Transducer Module.



After following the prompts, and managing all of this configuration, you will be prompted to start the installation:



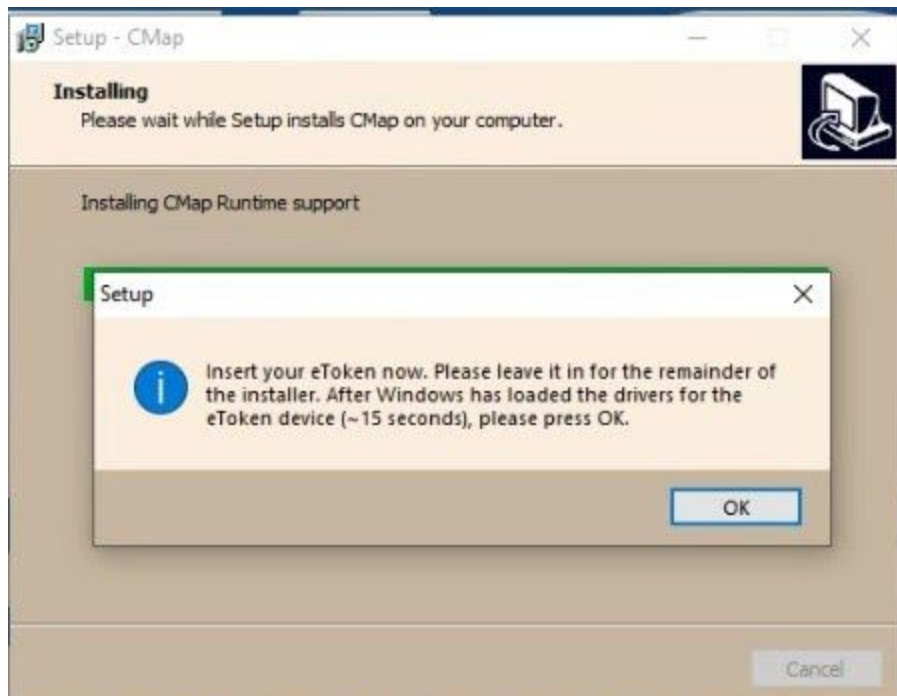
No C-Map Installation (Non-default)

If you have chosen not to include C-Map in your SonaSoft™ installation (eg you do not wish to use the Chart Viewer), then you will reach the end after clicking next above and you can skip the remainder of this guide.

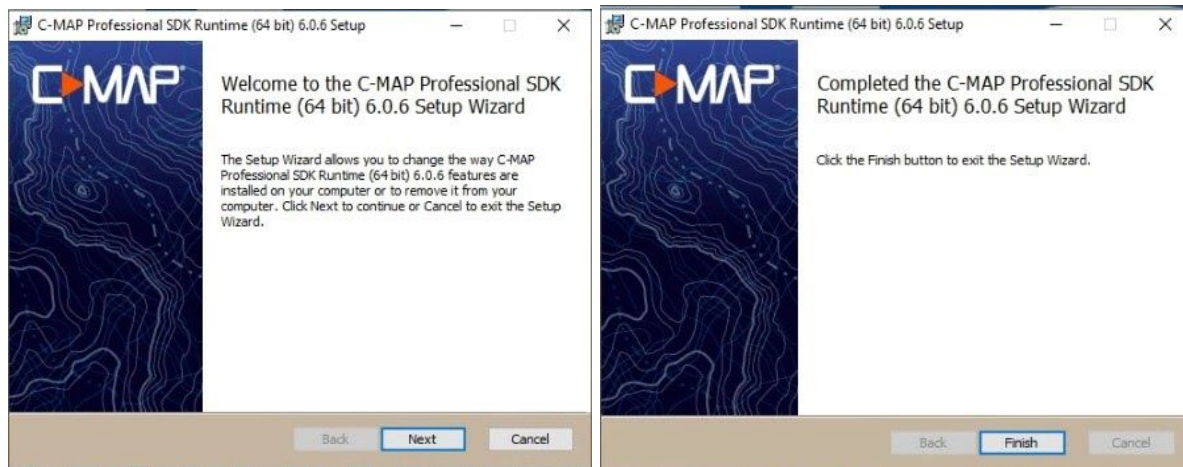


C-Map Runtime Install (Default)

The default installation path includes the installation of C-Map to add support for the display of nautical charts. On clicking next, you will be prompted to insert the C-Map USB e-Token into the FarSounder processing computer:



After pressing OK, follow the prompts to complete the installation of the C-Map runtime:



Next you will be prompted to run "C-Map User Setup", note **that this process will need to be completed twice** because we are installing two runtime environments (32 bit and 64 bit) in order to access all of the C-Map functionality.

1. At this first prompt, click *eToken*:



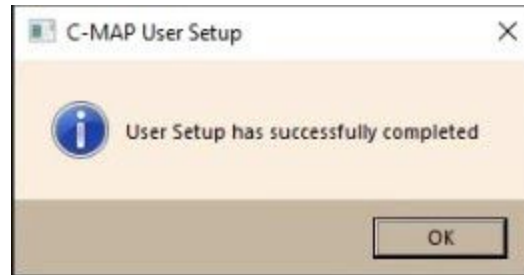
2. If, after that, you are prompted with the following:



Please click "Re-initialize" and confirm:

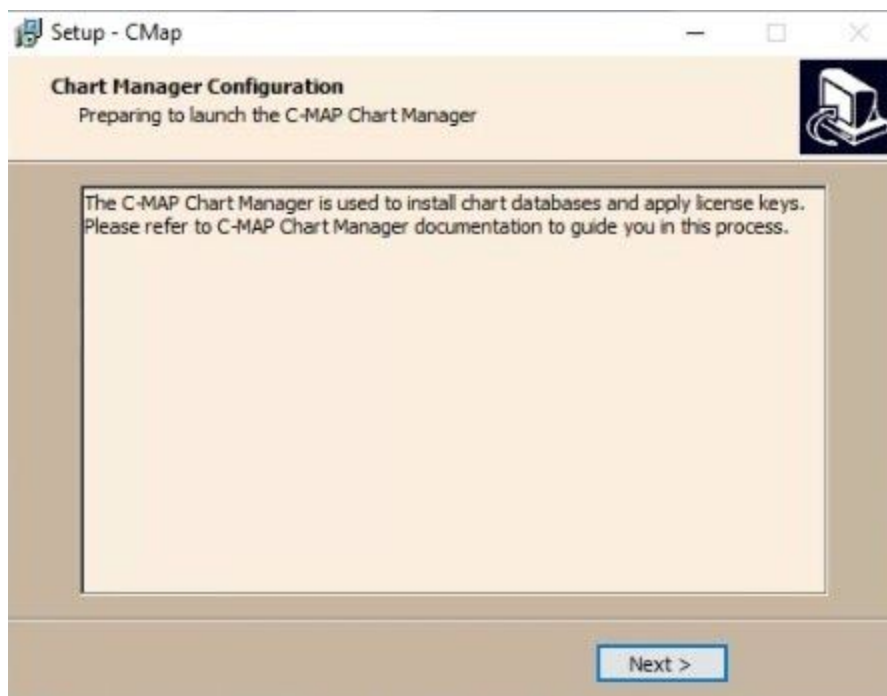


3. Finally, you should see:



Note, as mentioned above, you will need to complete this process twice to configure both C-Map environments.

Continuing on, the next step will open the Chart Manager and allow you to add Chart Licences and C-Map Chart databases so that nautical charts can be displayed in SonaSoft™. The SonaSoft™ User manual details this process, and licenses or databases can be added at any time after completing the installation.



After closing the Chart Manager (whether you have added licenses for chart data or not), you will see:



Click finish and finally you will see:





A WHOLE NEW VISION UNDERWATER

Commercial In Confidence

The default settings will launch SonaSoft™ on clicking *Finish* and open a PDF describing the latest updates and changes to the software.

Commercial In Confidence

FarSounder, Inc. - 151 Lavan Street - Warwick, RI 02888 - USA
phone: +1 401 784 6700 - fax: +1 401 216 8390 - www.farsounder.com